

**U.S. Army Corps of Engineers  
Fiscal Year 2021  
Handshake Program Application**

**Please review instructions before completing application!**

---

Corps Lake/River Project Name: **Pine Flat Lake**

District / Division:**Sacramento District / South Pacific Division**

Handshake Proposal Title: **Kings River Wildlife Area Redevelopment**

Corps POC Name:**Chelsea Jones / Adam Thompson**

Telephone:(**559**) **787 - 2589** ext.

E-Mail: **chelsea.j.jones@usace.army.mil / adam.t.thompson@usace.army.mil**

---

**A. Checklist:**

1. Will the Handshake funds be spent on Corps facilities and resources that are being fully maintained by the Corps? (not in outgranted parks)  **Yes**  **No**
  2. Will the Challenge Partnership agreement be with a non-federal public or private entity(ies)?  **Yes**  **No**
  3. Is the proposed activity within current authorities and contained in the annual or 5-year work plan in the approved lake project OMP?  **Yes**  **No**
  4. Have all of the NEPA requirements been considered for this project?  **Yes**  **No**
  5. I am aware the Challenge Partnership Agreement must be reviewed and Approved by District Office of Counsel before sending to HQUSACE.  **Yes**  **No**
  6. If the full funding amount requested is not available, could a portion of this Handshake Project be completed with partial funding?  **Yes**  **No**
  7. I am aware that all government funds must be spent in accordance with FAR, DFAR and AFAR contracting laws and regulations, and that Handshake funds cannot be provided to the partner(s).  **Yes**  **No**
  8. Did you participate in a Handshake Webinar in 2019 or review a 2019 Handshake Webinar on the Gateway?  **Yes**  **No**
- 

**B. Handshake Funding Request (maximum \$25,000): \$25,000**

**C. Incentive Points Category: Check the appropriate box if your application qualifies to receive bonus points on the evaluation score.**

- This project will be completed with a national MOU partner with which the Lake or Project hasn't previously partnered. (100 points).
- This project reduces O&M cost to the Corps over the lifecycle of the proposed project or improves existing infrastructure. (100 points).

**D. Describe your partnership and the proposed Handshake Partnership Project:**

Project applications will be evaluated on the categories below. Please complete each section as appropriate.

**Summary Statement:**

The US Army Corps of Engineers (USACE) at Pine Flat Lake (PFL) in partnership with the Kings River Conservancy (KRC) and other organizations, is redeveloping the Kings River Wildlife Area (KRWA). This work is planned in 3 phases designed to further day-use recreation and environmental education opportunities at PFL. Phase 1 was recently completed through a KRC awarded \$100,000 grant from the Cowell Foundation for the construction of a vault restroom, picnic shelter/outdoor classroom, and an ADA compliant multi-use interpretive trail. PFL would like to continue this redevelopment through the use of a Handshake Partnership Program to perform the Phase 2 goals of adding river access trails, litter stations, a life jacket loaner station, interpretive displays, wildlife food plots, and the planting of pollinator species. Plans for Phase 3 will include the addition of an ADA compliant fishing platform to complete the redevelopment project.

**Handshake Funding Cost Break Down:**

-Heavy duty vandal proof waste stations in easily accessible locations: 7 cans @ \$775 each = \$5,425

-Improved signage/interpretive display: California Department of Fish and Wildlife and USACE regulations compliant signage, area description signage with brochures, life jacket loaner station/water safety panels, leave no trace panels - Approximate cost: \$2,000

-Access trails: Inundation resistant access trails = 2,653 total square feet of crushed stone with pressure-treated lumber as borders - Approximate cost: \$14,000 for lumber + \$2,000 for hardware = \$16,000

-Seed supply for wildflowers and food plots: \$1,500

Total: \$24,925

**Longevity / O&M description:**

This project permanently upgrades existing infrastructure for use by future generations. PFL would like to continue redeveloping this area through the use of Handshake funds to provide more day-use accessibility and additional wildlife habitat. The materials used for this project include pressure treated lumber and industrial grade hardware. It is estimated that the developments within this phase will last a minimum of 5 years. An evaluation will be incorporated into year 5 of the PFL Operations and Maintenance Plan (OMP) to determine future maintenance costs. Upkeep and maintenance will continue to be carried out primarily by volunteers with support from the PFL staff. Maintenance by USACE will be routine, minimal, and inexpensive at an estimated maximum of \$1,000 per fiscal year. The area is regularly patrolled by Park Rangers to ensure the safety of visitors. The planned improvements will create a well kept environment and image, which reduces O&M costs. In 2020 approximately 750 environmental contacts were made by Park Rangers in an effort to reduce dumping and litter violations in the KRWA. Improvements incentivize, encourage, and create more opportunities for day users to properly dispose of their trash, and take care of public lands. This will help reduce the needed level of park ranger presence, thus reducing O&M costs.

**Partnership Value:**

Partnerships are critical to the redevelopment, recreation, and education opportunities that occur, and will continue to occur, in this day-use area. PFL manages four other recreations areas with two campgrounds, and two additional wildlife management areas. PFL depends on its partners to help achieve project goals and one of its most valuable partners is the KRC, a non-profit entity. KRC was awarded a \$100,000 grant from the Cowell Foundation in 2018. KRC hired an Education Director who partners with PFL Park Rangers to provide interpretation, Every Kid Outdoors programs, and water safety programs to support this partnership. These programs have become popular in the community and PFL plans to offer these to more user groups in the future. KRC has been invaluable in the completion of Phase 1 of the KRWA redevelopment. They also pledge future volunteers, to assist with litter efforts, and other general upkeep of the area.

Union Sportsmen's Alliance (USA) became a new national MOU partner for PFL during the redevelopment of KRWA by erecting the pavillion/outdoor classroom. Their services have been, and will continue to be, utilized in future redevelopments of the KRWA. PFL proposes future services in metal working for handrail and life jacket loaner station construction, as well as carpentry for construction of trail staircases, from USA.

Other partnerships include local Scout troops, who will participate in service projects to install signs for the interpretive trail, and create other trails throughout the area. The California Conservation Corps has offered labor to create river access trails, and install benches. The Green Club at Reedley College, the National Environmental Education Foundation, and the Recreation Administration and Agriculture Science Departments at California State University Fresno, all pledge to provide volunteers, outreach, and events to support the progress of this project. The Handshake funds are crucial to the Phase 2 redevelopment projects increasing river access areas at the KRWA.

#### **Recreational Benefit:**

During the current COVID-19 pandemic, PFL and the KRWA have seen an influx of outdoor recreation as the local communities continue to seek safe outdoor recreation experiences. The staff at PFL are confident this trend in visitation will continue, and recognize the need to provide and maintain a safe environment for recreation. These components of Phase 2 are expected to expand day-use visitation in the already popular KRWA. This redevelopment will offer natural resource stewardship projects, outdoor education field trip opportunities, and a vast array of other outdoor opportunities. Public access points and trails will make river access safer and easier while limiting erosion and overuse (see attached maps).

The addition of a vault restroom provides restroom facilities for school groups and other recreational users. The newly erected pavillion/outdoor classroom will continue to provide year round shelter for local school and club field trips, casual day users, picnickers, anglers, bird watchers, hikers, and other outdoor enthusiasts. The pavillion will additionally improve visitation among various day user groups, since there are currently no designated picnic areas at PFL. Our future plans are to offer this facility for special use permitted events through the Recreation.gov reservation system.

Additional interpretive displays will highlight water safety and environmental stewardship education. The addition of brush piles, food plots, and pollinator gardens will improve wildlife habitat and create a unique visitor experience. These projects will meet the management objectives to provide public recreation opportunities and resources which are consistent with the carrying capacities, and will maintain biological values, sustainable conditions, and healthy project lands and waters.

#### **Environmental Stewardship Value:**

This area provides critical wildlife upland and riparian habitat components. The KRWA land was previously developed as a campground facility, and now has been repurposed for recreational day-use. The KRWA contains critical components needed for attracting and maintaining wildlife habitat. The addition of these components will enhance the use of the area by the public as a watchable wildlife area. This project includes the planting of approximately 150 lbs of vernal alfalfa, spring oat, robust barley, hairy vetch, and red clover (see attached maps). The germination of the seeds will help to feed local wildlife with the intention of increasing habitation and improving visitor experience. Establishing plots will promote nesting of upland game and song birds within the area. Approximately 100 lbs of native wildflower seed will be planted in various areas to help provide habitat and food for native pollinators and increase the potential for interpretive education in the KRWA.

Disked areas for food plots and fire breaks, brush piles for habitat, and a wildlife guzzler for fresh water access and wildlife attraction will be added. The area will be routinely monitored for threatened/endangered species prior to construction of future facilities, and managed for invasive species control. Earthwork will be within the previously disturbed campground area, designated as 'Recreation - Intensive Use' in current Master Plan. The creation of a stable trail system to river access areas will decrease river bank erosion, and additional waste containers will decrease water pollution, thus improving fishery health.

#### **Communication & Education Value:**

Outdoor educational opportunities will be improved by the addition of interpretive displays. These interpretive panels are designed to reach more user groups by including messages in English and Spanish. The Phase 1 interpretive trail is an extension of an existing interpretive trail on nearby property managed by KRC, and will provide additional educational opportunities to the recreating public. The pavillion creates an excellent

opportunity for visitors to participate in outdoor educational programs hosted by USACE and its partners. Since the redevelopment of the area began in 2018, USACE has partnered with KRC and Sanger Unified School District to provide 11 classroom field trips, with future plans in place to host many more interpretive and school programs.

PFL plans to add water safety signage, an additional life jacket loaner station, and educational kiosks about environmental stewardship. PFL also plans to design and install litter control stations monitored by project volunteers. The addition of these structures and panels will enhance the USACE image in a popular area, which is currently not easily recognizable as being associated with PFL or USACE.

**Innovativeness:**

This area was a public campground facility operated by a partnering agency and when the campground was closed in 2012, they were required to restore the area to a more natural state by removing all structures related to the campground operations. All that remained were the asphalt roadways and approximately 16 concrete slabs. In 2014 the area was renamed the Kings River Wildlife Area and was fenced off to allow nature to begin reclaiming its hold in the riparian habitat. In 2018 the PFL Park Manager began the process to transform the KRWA into an ADA accessible nature trail and recreational picnic area. KRC was awarded a \$100,000 grant from the Cowell Foundation and used these funds, in partnership with PFL, to accomplish the vision. Through this partnership existing asphalt roadways have been repurposed into an ADA compliant interpretive trail system, and the concrete slabs will eventually all be removed. PFL utilized a low cost contract through Cal Fire Miramonte Conservation Camp to limb up the area and provide fire prevention techniques, which in-turn has created additional habitat for wildlife. All past and future work in the area will be under the supervision and guidance of USACE. The return of construction in the KRWA has sparked visitor interest and PFL seeks to continue the development of this area through the use of the Handshake Partnership Program.

**Conclusion:**

PFL understands the need to provide a safe environment for recreational users in the KRWA. Many visitors at PFL have fond memories of visiting this area in the past when it was a campground. Through the use of a Handshake Partnership, the community will be able to once again enjoy the area for multi-purpose recreation. If Handshake Partnership funds are not received, PFL will seek new partnerships and funding for to continue redevelopment.

Double click on spreadsheet to access data entry fields and to enter Partner names.

**You MUST enter partner names into the spreadsheet:**

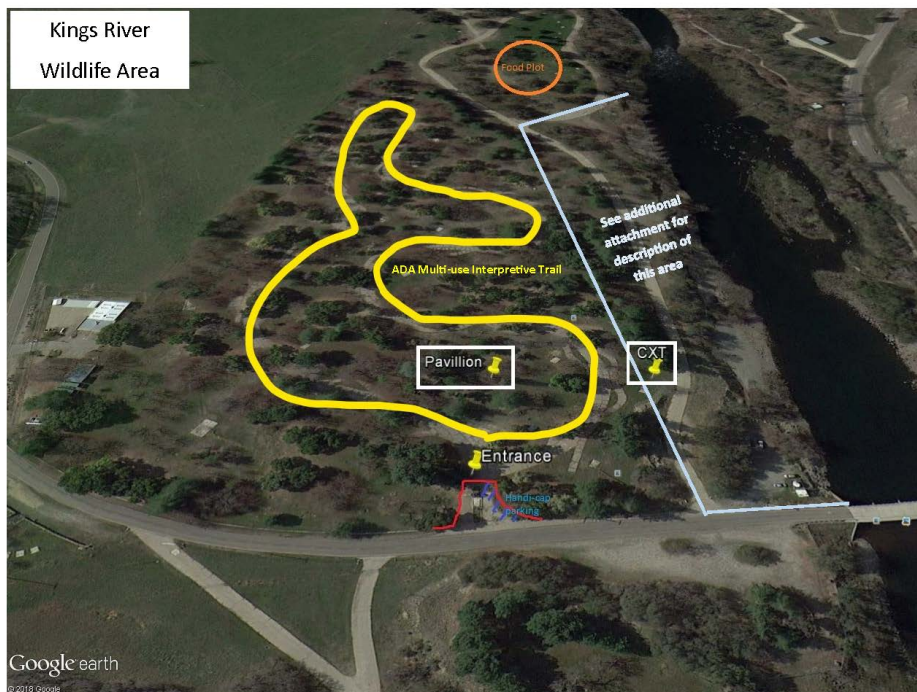
	<b>Local Corps Office</b>	<b>Handshake Funds</b>	<b>KRC</b>	<b>USA</b>	<b>Reedley College</b>	<b>NEEF</b>
Salaries	\$15,000	N/A	\$10,000	\$0	\$0	\$0
Travel	\$0	N/A	\$0	\$0	\$0	\$0
Materials and Supplies	\$10,000	\$20,000	\$106,000	\$0	\$0	\$0
Equipment Use	\$2,000	\$5,000	\$0	\$5,000	\$0	\$0
Funds Contributed	N/A	N/A	\$0	\$0	\$0	\$0
Personal Property	N/A	N/A	\$0	\$0	\$0	\$0
Volunteer	N/A	N/A	\$2,000	\$30,000	\$5,000	\$11,000
In-Kind Services	N/A	N/A	\$1,500	\$0	\$0	\$0
Other (explain below)	\$0	\$0	\$0	\$0	\$0	\$0
<b>Total</b>	<b>\$27,000</b>	<b>\$25,000</b>	<b>\$119,500</b>	<b>\$35,000</b>	<b>\$5,000</b>	<b>\$11,000</b>
<b>Share of Total Cost</b>	11.9%	11.0%	52.6%	15.4%	2.2%	4.8%
	22.9%					
	<b>CCC</b>	<b>Boy Scouts</b>	<b>Girl Scouts</b>	<b>CSU Fresno</b>	<b>Partner 9</b>	<b>Partner 10</b>
Salaries	\$0	\$0	\$0	\$0	\$0	\$0
Travel	\$0	\$0	\$0	\$0	\$0	\$0
Materials and Supplies	\$0	\$250	\$0	\$0	\$0	\$0
Equipment Use	\$0	\$250	\$0	\$0	\$0	\$0
Funds Contributed	\$0	\$0	\$0	\$0	\$0	\$0
Personal Property	\$0	\$0	\$0	\$0	\$0	\$0
Volunteer	\$3,000	\$500	\$250	\$250	\$0	\$0
In-Kind Services	\$0	\$0	\$0	\$0	\$0	\$0
Other (explain below)	\$0	\$0	\$0	\$0	\$0	\$0
<b>Total</b>	<b>\$3,000</b>	<b>\$1,000</b>	<b>\$250</b>	<b>\$250</b>	<b>\$0</b>	<b>\$0</b>
<b>Share of Total Cost</b>	1.3%	0.4%	0.1%	0.1%	0.0%	0
	<b>Partner 11</b>	<b>Partner 12</b>	<b>Partner 13</b>	<b>Partner 14</b>	<b>Partner 15</b>	<b>Total</b>
Salaries	\$0	\$0	\$0	\$0	\$0	\$25,000
Travel	\$0	\$0	\$0	\$0	\$0	\$0
Materials and Supplies	\$0	\$0	\$0	\$0	\$0	\$136,250
Equipment Use	\$0	\$0	\$0	\$0	\$0	\$12,250
Funds Contributed	\$0	\$0	\$0	\$0	\$0	\$0
Personal Property	\$0	\$0	\$0	\$0	\$0	\$0
Volunteer	\$0	\$0	\$0	\$0	\$0	\$52,000
In-Kind Services	\$0	\$0	\$0	\$0	\$0	\$1,500
Other (explain below)	\$0	\$0	\$0	\$0	\$0	\$0
<b>Total</b>	<b>\$0</b>	<b>\$0</b>	<b>\$0</b>	<b>\$0</b>	<b>\$0</b>	<b>\$227,000</b>
<b>Share of Total Cost</b>	0.0%	0.0%	0.0%	0.0%	0.0%	100%

Explanations:

Photo from 2018 Kings River Wildlife Area Ground Breaking Ceremony with U.S. Army Corps of Engineers and Kings River Conservancy (KRC) marking the start of a partnership aimed at working together towards a shared goal and vision of redeveloping this wildlife management area.



Map of KRWA showing the recently completed Phase 1 additions of an ADA multi-use interpretive trail, pavilion shelter/outdoor classroom, and CXT vault toilet, and marking location for Phase 2 Handshake Program projects by referring to additional attachment below.



Draft of Phase 2 proposed locations for food plots, brush habitat, and pollinator habitat within the KRWA.



Map detailing Phase 2 Handshake Program projects of river access trails, interpretive display signage, and additional waste stations.



Zoomed in map further detailing Phase 2 Handshake Program projects.

